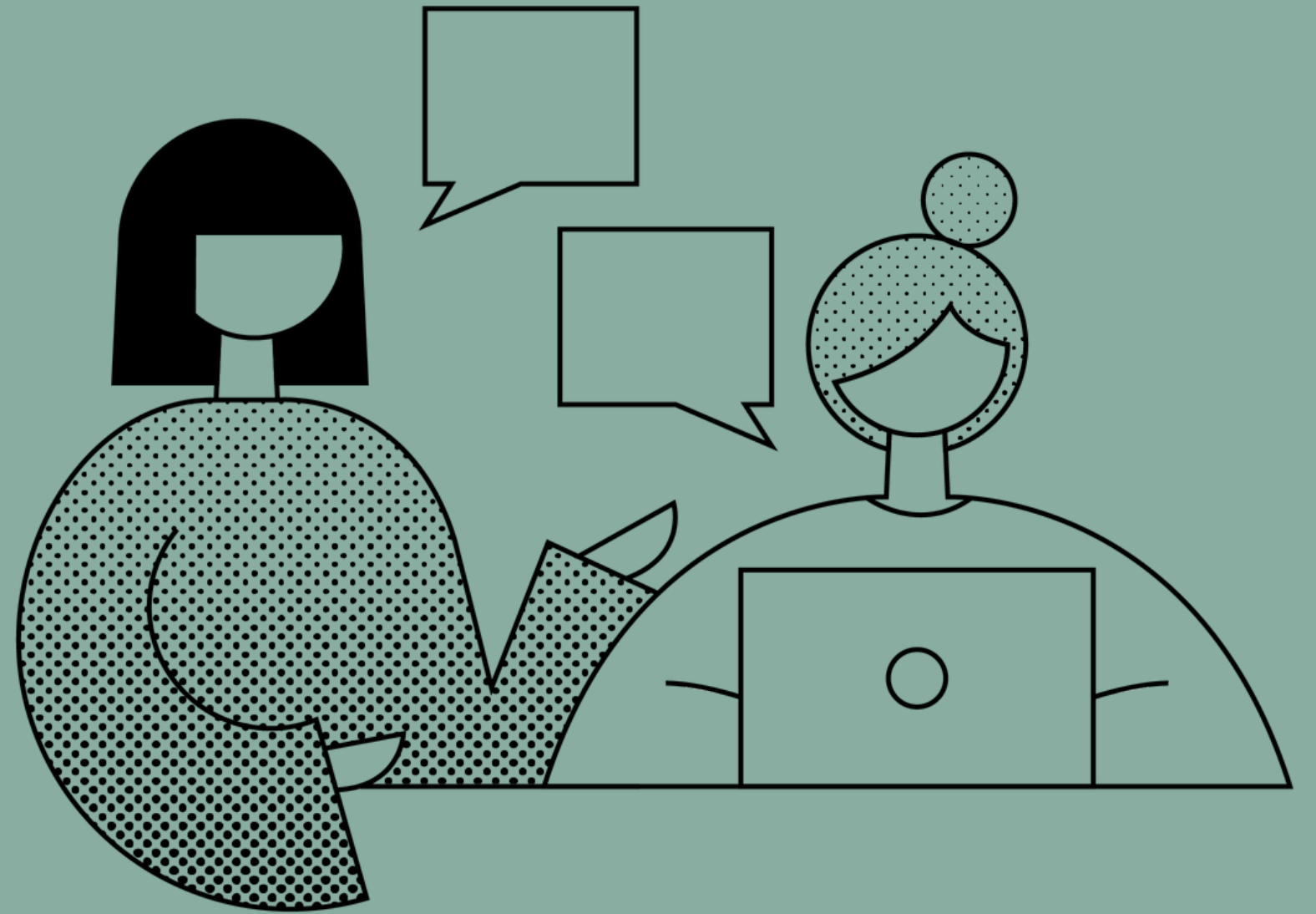
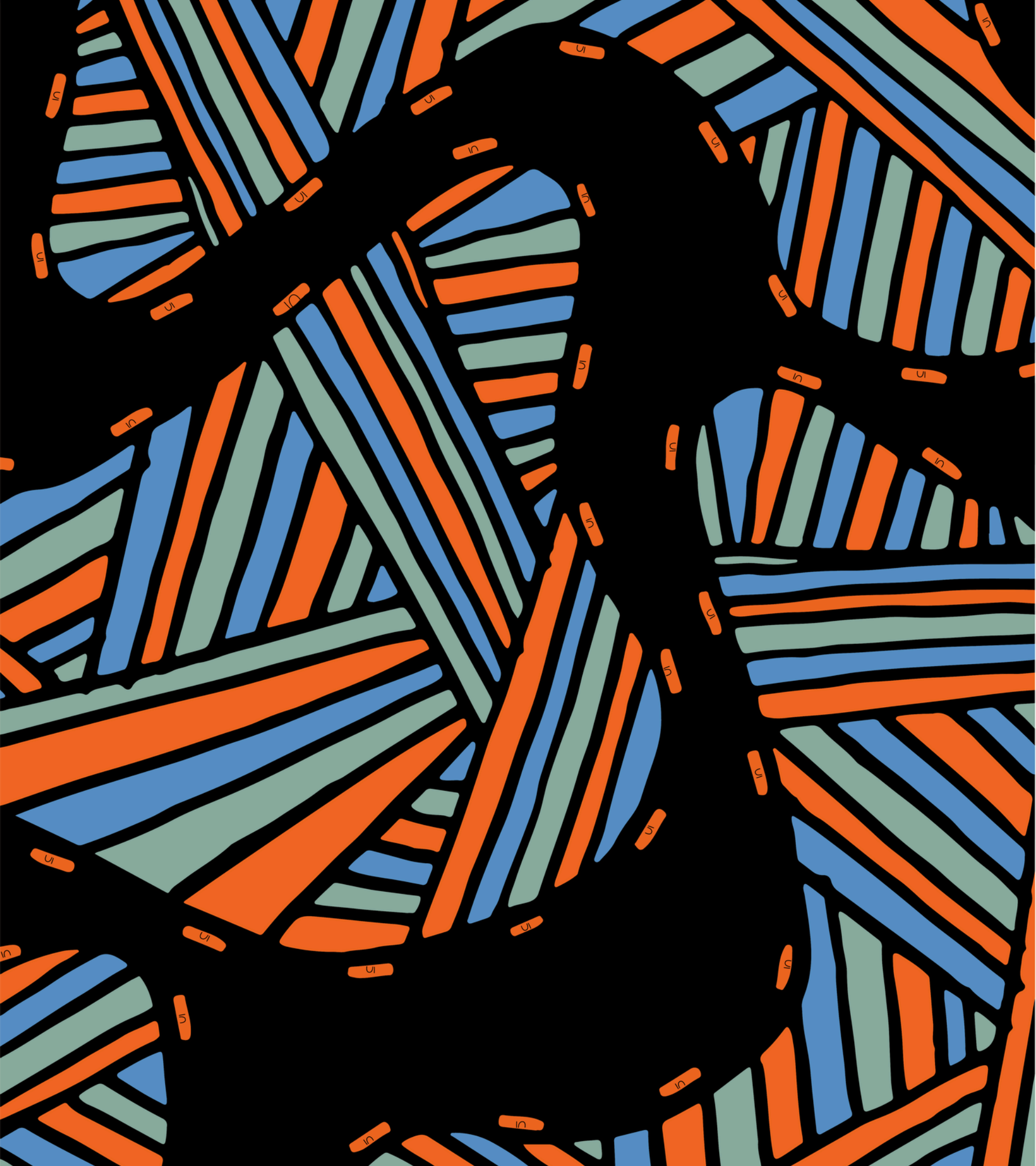


WOMINDJEKA
KAYA
GURUMBA BIGI
YUMALUNDI
BUDYERI KAMARU
HELLO AND WELCOME...

Mentoring Program Launch





ACKNOWLEDGEMENT OF COUNTRY

“Kiiraka”

BY ARTIST NARELLE OSBORNE

Australia as a whole from its land to its people is diverse and has many layers.

Welcome from NAWO



Louise Weine
NAWO CEO

Our Corporate Members



What are we covering today?

- Welcome!
- Overview of the NAWO Mentoring Program
- The Program Structure
- NAWO GEM
- Time Commitment
- Sharing from former participants
- Q&A

The NAWO Mentoring Program



<https://www.youtube.com/watch?v=TVXoc7hraNQ>

2025 Program Overview

- Australia-wide (with some international participants) virtual mentoring program
- Program duration: 17 February to 31 October 2025
- Bespoke matching process
- Structured sessions aligned to NAWO learning priorities
- Provides professional growth and networking

Mentoring Circles



- Groups of 4-6; working within operations
- Emerging or mid-career level
- Aspire to executive roles in operations in 2-5 years
- 7 sessions x 90 minutes

1:1 Mentoring



- Individuals; any function in operational businesses
- Any role or career level
- Desire personal and professional growth
- 4 sessions x 60 minutes

GEM Program

- At NAWO, we believe in driving change to support gender balance at all levels in operations.
- Along with us on this journey, are male leaders who step up as mentors, and who work within their organisations to support women.
- Having run the pilot last year, NAWO in partnership with Our Watch is running a program to upskill men who want to contribute meaningfully and effectively to gender balance in their businesses.
- 19 men from across 11 different NAWO member organisations are participating.

The Mentoring Program includes:

- NAWO tools, resources and hosting platform
- A dedicated planning and goal setting session
- Structured mentoring sessions
- Invite-only networking events for the 2025 cohort
- Celebration event at program end



Time commitment

- Jan: Matching and introductions
- 17 Feb: Program Launch
- Complete Baseline Mentee Survey
- Mentoring sessions (Feb – Oct): 4 x 60mins (Individual) or 7 x 90mins (Circles)
- GEM Sessions (Mar - May): 5 x 60 mins info sessions, and 5 x 60 mins mentoring circles
- July: Mid-Program Check In
- By 31 Oct: Structured sessions completed
- Nov: Program conclusion and celebration



Learning from Alumni

Now an opportunity to hear from our Mentors of the Year in 2023 and 2024, and our NAWOxTalks Winner 2024 about their experiences in the program, and any tips or tricks for maximising the opportunity.

Belinda Bright

**Head of Engineering and Technical Support, Water and Environment Services
Sydney Water**

Jacob Chretien

**GM Technical - Paper Division
Opal**

Shelley Haslett

**Senior Food Technologist–
Research & Development**

Learning from Alumni

I'd really like to invite participants who have been with us in previous years (as a mentor, a mentee, or both) to share with us their top tips for getting the most out of your mentorship.



Get involved with NAWO

Events

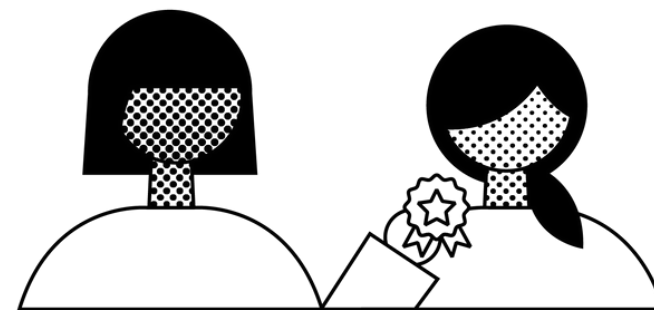
In-person events across the country, plus online sessions.

Upcoming events:

- 20 Feb: Speed Networking in Perth
- 25 Feb: Walk & Talk in Brisbane
- 27 Feb: Career Club online session
- 5 March: Headshots and Hot Coffees in Newcastle
- 6 March: Accelerating Equality with SAGE in Adelaide
- 13 March: Connect with NAWO in Cairns
- 18 March: Inclusive, Equitable Leadership Webinar
- 19 March: Connect with NAWO in Gladstone
- 26 March: Orica's Kooragang Island site tour

Resources

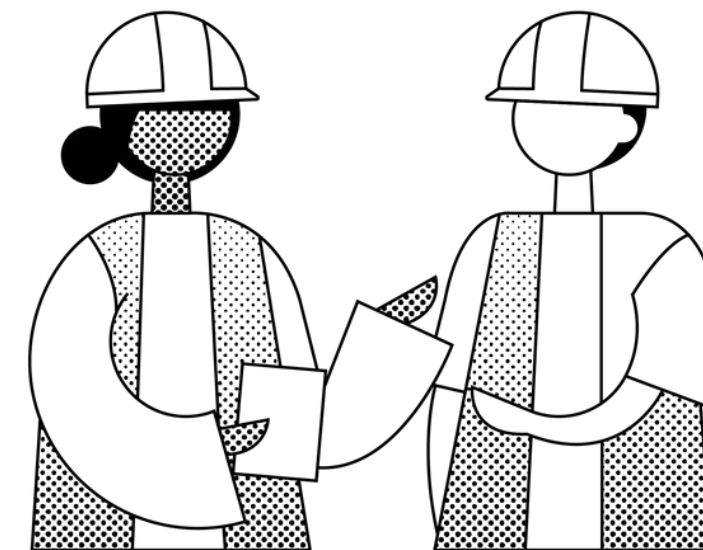
Access a range of resources including webinar recordings and articles - all part of your NAWO membership - at nawo.org.au/portal



Socials

Follow us on our social media channels:

-  NAWO National Association of Women in Operations
NAWO Network News
-  NAWO – National Association of Women in Operations
-  @nawo_au
-  @womeninoperations
-  NAWO Podcasts



See what's coming up at nawo.org.au/events

Questions and support

Alisha Taylor-Jones
Mentoring Program Manager
mentoring@nawo.org.au